

## ScrumWorks® Pro Tutorial: Web Reports

### Question:

"How can I supply reports to my stakeholders, managers, or others who do not have ScrumWorks Pro accounts? Will I need to keep regenerating these reports every time they are requested?"

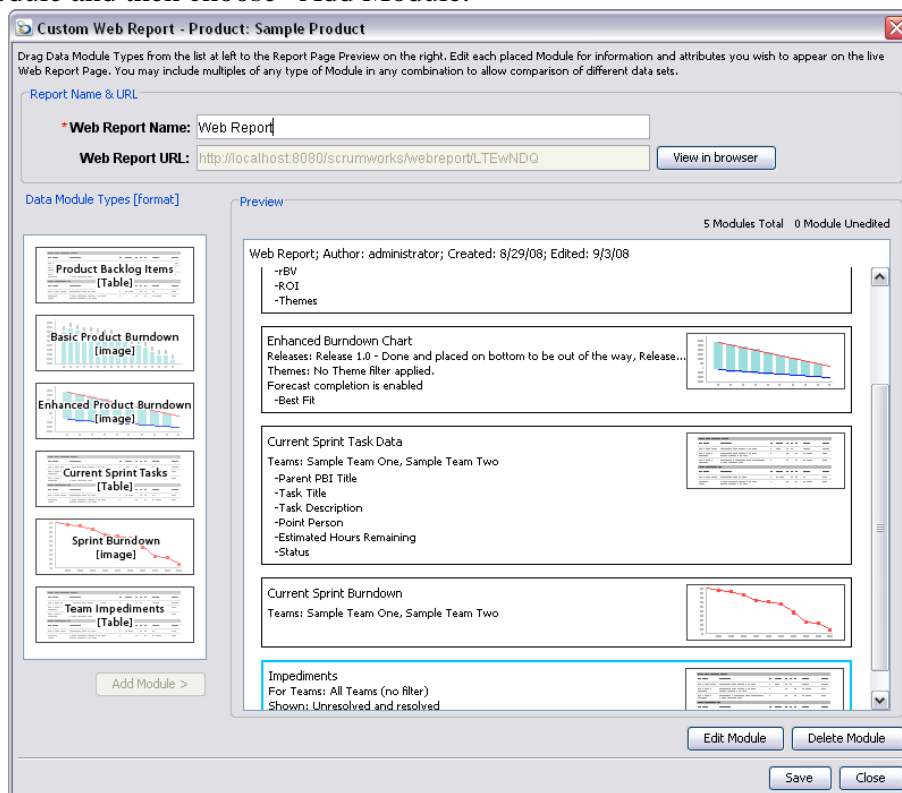
This tutorial will provide answers to these questions by introducing you to something we call "Web Reports."

## What Exactly Are Web Reports?

Web Reports allow users to create customized, read-only Web pages that contain ScrumWorks Pro data and graphical report elements. The published reports do not require authentication and are accessible to anyone who knows the unique URL of the report. Web Reports reflect real-time, up-to-date ScrumWorks Pro data; the reports always reflect the Product at the time they are viewed, instead of representing a static snapshot of the Product at the time the report was created. Web Reports can be bookmarked and accessed as needed for real-time reporting needs.

To access Web Reports from the Desktop Client choose "Reports > Web Reports" from the main menu.

The Web Reports menu consists of Data Modules on the left and a Preview pane on the right. To create a Web Report you simply drag and drop the modules you wish to include in your report or select the module and then choose "Add Module."



## How Do I Build a Report from the Modules?

Each module within Web Reports covers a specific aspect of the data within ScrumWorks Pro. The modules are: Product Backlog Items; Basic, Enhanced, and Sprint Burndowns; Current Sprint Tasks; and Impediments. Once you have selected a module, you may double-click it or select it and choose “Edit Module.” This will allow you to decide what you would like the module to display. Once you have selected your modules, you may use the drag-and-drop interface to rearrange the modules; the order you select will be the order they are displayed in the final Web Report.

Each module must be edited and customized before the report can be saved.

The Product Backlog Items module allows users to display PBIs in the product, filtered by releases and themes. Additionally, users can select the PBI attributes they would like displayed.

**Specify Module: PBIs - Product: Sample Product**

Select attributes for PBIs from specific Releases and Themes to be published in this Module

PBI attributes	Releases	Themes
<input type="checkbox"/> Check All	<input type="checkbox"/> Check All	<input type="checkbox"/> Check All <input type="checkbox"/> Include un-Themed PBIs
<input type="checkbox"/> Key	<input checked="" type="checkbox"/> Release 1.1 Texas Holdem and 5 card Stud	<input type="checkbox"/> AI
<input checked="" type="checkbox"/> Title	<input type="checkbox"/> Wish List - No dates makes this release just	<input type="checkbox"/> Bug
<input type="checkbox"/> Description	<input type="checkbox"/> Release 1.0 - Done and placed on bottom b	<input type="checkbox"/> Card Managment
<input type="checkbox"/> Estimate		<input type="checkbox"/> Casino
<input type="checkbox"/> Status		<input type="checkbox"/> Draw
<input type="checkbox"/> BW		<input type="checkbox"/> Epic
<input type="checkbox"/> rBV		<input type="checkbox"/> JIRA
<input type="checkbox"/> ROI		<input type="checkbox"/> Poker
<input type="checkbox"/> Themes		<input type="checkbox"/> Robustness
		<input type="checkbox"/> Stud
		<input type="checkbox"/> Texas Holdem

OK Cancel

PBI Options

**Web Report: Web Report, Product: Sample Product**

Author Username: administrator; Created: 8/29/2008; Modified: 9/3/2008



**Product Backlog Items**

From Releases: Release 1.1 Texas Holdem and 5 card Stud, Wish List - No dates makes this release just for sorting, Release 1.0 - Done and placed on bottom to be out of the way

Of Themes: AI, Bug, Card Management, Casino, Draw, Epic, JIRA, Poker, Robustness, Stud, Texas Holdem, including unthemed

**Release: Release 1.1 Texas Holdem and 5 card Stud**

Key	PBI Title	Description	Est.	Status	BW	rBV	ROI	Themes	Sprint end [Team]
Cards-175	10? and 4? cause have their values reversed	User Story: The 10? counts as the 4? when ranking hands.  Definition of Done: - The 10? counts as the 10 of hearts and the 4? counts as the 4 of spades.	4	Done	10	2%	1.97	Bug	5/4/2007 [Sample Team One]
Cards-173	Game Crashes after player discards	User Story: The game crashes to desktop after the player discards.  Definition of Done: - The game does not crash after discard	6	Done	15	3%	1.97	Bug	5/21/2007 [Sample Team One]
Cards-174	2? crashes the game when dealt	User Story: 2? crashes the game when dealt.  Definition of Done: - 2? (2 of spades) does not crash the game	4	Done	15	3%	2.95	Bug	5/21/2007 [Sample Team One]

Example of module within the Web Report

The Basic and Enhanced Burndown modules provide the same view as the standard options found within the Burndown Charts menu itself. Once you have selected your options, you can hit the “Preview” option to view the report before completing it.

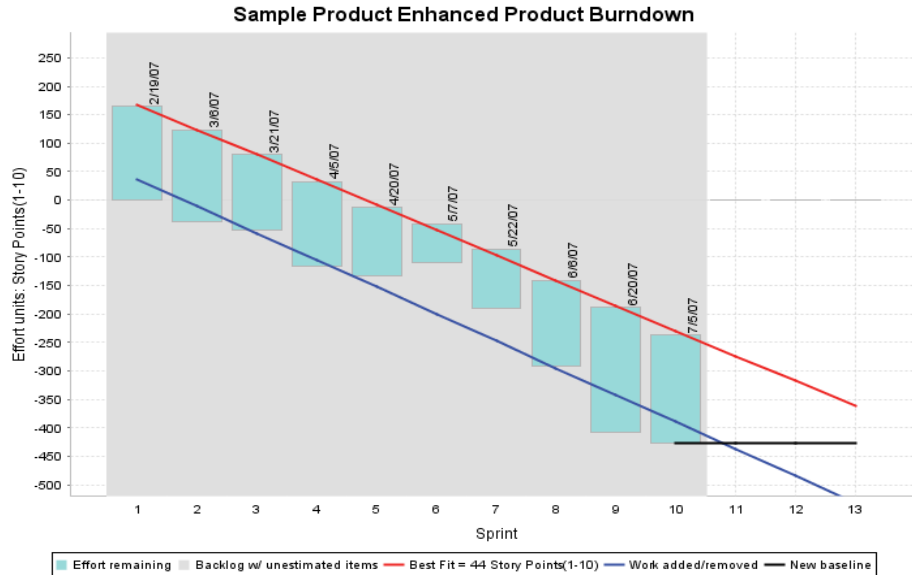
deducted from the player to the left of the dealer.

Definition of Done:

- When a hand begins the player to the left of the Small Blind Player (or 2 players to the left of the Small Blind Player)

### Enhanced Burndown Chart

From Releases: Release 1.0 - Done and placed on bottom to be out of the way, Release 1.1 Texas Holdem and 5 card Stud  
Theme filter: No Theme filter applied.



Example of an Enhanced Burndown below a PBI module

The Current Sprint Tasks module will allow you to display the current Tasks for one or more teams. You may choose the attributes of Tasks to display.

**Specify Module: Tasks - Product: Sample Product**

Specify the Task attributes to be displayed in this Module.

Task Attributes:	Teams Included:
Display the following Task information in this Module:	Select which Teams' Tasks should be included in this Module:
<input type="checkbox"/> Check All	<input type="checkbox"/> Check All
<input checked="" type="checkbox"/> Parent PBI Title <input checked="" type="checkbox"/> Task Title <input type="checkbox"/> Task Description <input type="checkbox"/> Point Person <input type="checkbox"/> Estimated Hours Remaining <input type="checkbox"/> Status	<input type="checkbox"/> Sample Team One <input type="checkbox"/> Sample Team Two

OK Cancel

Current Task Sprint Options

### Current Sprint Task Data

For Teams: Sample Team One, Sample Team Two

**Sprint: 7/5/2007 - 7/19/2007; Team: Sample Team One**

Task Title	Task Description	Point Person	Est.	Status
<b>Parent PBI: (Cards-74) Customizable Card Backs - .PNG</b>				
Mock up UI		(unspecified)	0	Not Started
Implement UI		(unspecified)	0	Not Started
Automate Integration Test	Automate an integration test to verify that this is fixed.	(unspecified)	0	Not Started
User Acceptance Tests		(unspecified)	0	Not Started
<b>Parent PBI: (Cards-206) Update Data During Import</b>				
Mock up UI		(unspecified)	0	Not Started
Implement UI		(unspecified)	0	Not Started
Automate Integration Test	Automate an integration test to verify that this is fixed.	(unspecified)	0	Not Started
User Acceptance Tests		(unspecified)	0	Not Started
<b>Parent PBI: (Cards-207) Anonymous Bug Refresh</b>				
Mock up UI		(unspecified)	0	Not Started
Implement UI		(unspecified)	0	Not Started
Automate Integration Test	Automate an integration test to verify that this is fixed.	(unspecified)	0	Not Started

Example of Current Sprint Data for a Sprint about to start

The Sprint Burndown module enables users to view the current Sprint Burndown chart or charts from the team, or teams you select. As with the Basic and Enhanced Burndowns, a preview may be viewed prior to saving the module.

**Specify Module: Sprint Burndown Graph - Product: Sample Product**

**Teams**  
Include the following Teams' Sprint Burndown charts to be displayed in this Module:

- Check All
- Sample Team One
- Sample Team Two

**Preview Graphs by Team**  
Individual task hours burndown graphs will be displayed for each selected Team.

**Team: Sample Team One Sprint: 7/5/2007 - 7/19/2007**

Date	Remaining Points
5-Jul	175
6-Jul	165
7-Jul	160
8-Jul	155
9-Jul	165
10-Jul	160
11-Jul	155
12-Jul	145
13-Jul	140

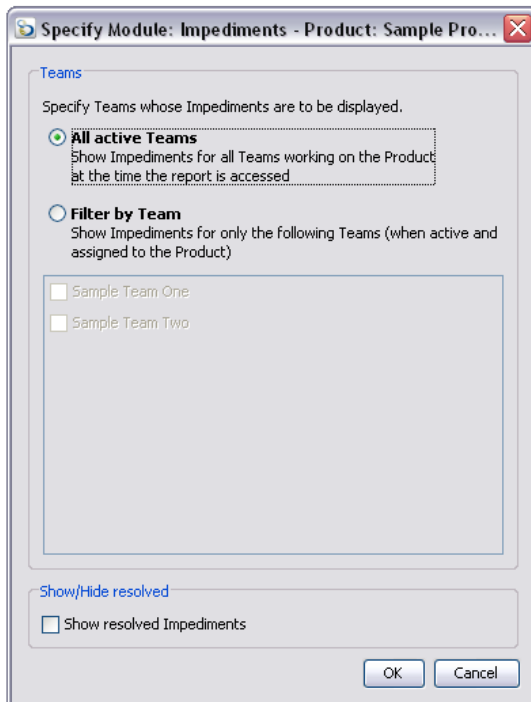
**Team: Sample Team Two Sprint: 7/5/2007 - 7/19/2007**

Date	Remaining Points
5-Jul	225
6-Jul	240
7-Jul	245
8-Jul	240
9-Jul	225
10-Jul	230
11-Jul	215
12-Jul	195
13-Jul	190
14-Jul	155
15-Jul	140

Buttons: Preview, OK, Cancel

Sprint Burndown Options, with the Preview button selected

The last module is Team Impediments. Here, a user may select either all active teams or a customized selection of specific teams. Additionally, users also have the option of showing resolved impediments.



Impediment Options

## Impediments

For Teams: All active Teams

Shown: Unresolved and resolved

Team: Sample Team One

Entered	Modified	Title	Description	Resolved	Reporter
2/25/07	3/6/08	Out of Coffee	The coffee is gone!!!		Buck Owens (bowens)

Impediment Report

Once you have selected your modules and arranged them in the desired order, you can name your report and save it. Saving the report will generate a Web Report URL, which can then be provided to anyone you wish to access the report. Remember, this report will update itself dynamically; no updating is necessary unless you wish to rearrange the layout or change visible attributes.

## Can I Link to the Images Directly?

Images within Web Reports can be referenced by its URL. Right-click on an image within a Web Report and select "Copy Image Location," then you may embed these images into your own HTML pages to include up-to-date charts.

## **What's the Security Model for Web Reports?**

The URL of a published report is not visible to any other users in ScrumWorks. Web Reports security is based on the URL and is contingent upon:

- 1) knowledge of the Web Report URL; and
- 2) access to the server that hosts your installation of ScrumWorks Pro

The value of this feature is that it allows stakeholders and managers, who don't need to work with the data, to conveniently access reports. This way, they do not need to purchase a user license.